

# St. Peter's Lutheran Church



**In-Person Worship**  
SATURDAY @ 5 PM  
SUNDAY @ 8 AM  
SUNDAY @ 10:30 AM  
Wednesday @ 7 PM Thanksgiving Eve  
Thursday @ 9 AM Thanksgiving

**Live Stream Worship**  
Sunday @ 10:30 AM  
Thursday @ 9 AM Thanksgiving Day  
[www.Facebook.com/StPetersFW](http://www.Facebook.com/StPetersFW)



## CONNECT to CHRIST WITH US

**November 19-20, 2022**

The Twenty-Fourth Weekend After Pentecost

Communion Weekend

Wildcat Bells: Ringing Sunday 10:30 service only

**Live Stream Worship Sunday at 10:30 am &**

**Thanksgiving morning at 9 am:** [www.Facebook.com/StPetersFW](http://www.Facebook.com/StPetersFW)

Large Print bulletins available from an Elder at in-person services.

**New National  
Mental Health  
Emergency  
Phone Number**

**988**

**On-Call Pastor  
260-888-6888**



**Prayer Text Hotline**

Text requests to  
**260-468-5816**



### **Sermon**

"The King Has Another Move"

Text: Luke 23:35-43

Pastor Steve Ahlersmeyer

### **Worship Readings**

Old Testament Reading:

*Jeremiah 23:2-6*

Epistle Reading:

*Colossians 1:13-20*

Gospel Reading:

*Luke 23:35-43*

# **Plan to join us for worship either Thanksgiving Eve service on Wednesday, November 23rd at 7:00 pm or Thanksgiving morning at 9:00 am.**



## **Altar Guild: Thanksgiving Service Display**

Produce to help decorate for our Thanksgiving services would be appreciated, and if appropriate, donated to the food drive after Thanksgiving. Any produce (Apples, pumpkins, veggies, fruits, nuts, etc.) that keep well can be dropped off by 9 a.m. November 23rd in the sacristy room located behind the baptismal font. Thank you for supporting us "Entering His gates with Thanksgiving" together!



## **Decorate our Sanctuary**

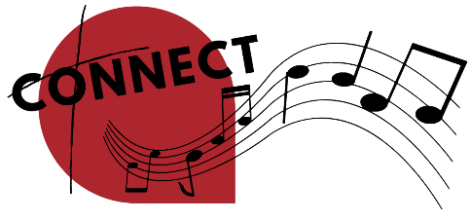
Sunday, November 27th, immediately following the 10:30 service, stay to help decorate our sanctuary for this most joyous season preparing for the birth of our Savior. Connect to worship and the reason for the season with this fun tradition. Bring a friend or bring the family in this blessed work for the church. The more the merrier! Contact Ben Clinkenbeard with questions.



## **Be a Greeter**

We are looking for people who are willing to join our greeter pool. We have four ladies who call people on our list and ask if they can greet. We do three months at a time. We ask you to come 20-30 minutes before service and greet people as they arrive. We have three doors we cover. When we call, you chose what date or dates you are available to serve. If you would be willing to greet, please contact the caller listed below of the service you attend. This is a wonderful way to meet people or catch up with those you already know.

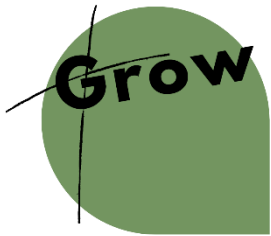
- Saturday 5:00 pm - Phyllis Aaron 402-1743
- Sunday 8:00 am - Connie Dierks 245-0447
- Sunday 10:30 am - Jan Hoffman 485-0602
- Special Services: Advent, Lent, Summer Monday Nights, & Holidays - Carol Goeglein 442-2870



# Music Ministry

## **Tim's Top 10 Hymn Sing**

Our annual Advent/Christmas Hymn-Sing will be Wednesday, December 7, at 7:00 pm. Tim would like to know YOUR favorites when selecting the hymns for this year's hymn-sing. Take the survey by calling the Church Office to make your requests. Voting will close on Sunday, November 27th. We will sing St. Peter's Top 10 favorite Christmas hymns on December 7!



## **GROW IN HIS GRACE WITH US**

### **Bible Studies**

#### **Sunday Bible Study**

Join us in-person in the Cornerstone Room Sundays at 9:15 AM (treats included) or online through our YouTube channel. Pastor

Nate will lead the study this week and continue with the video series, "This Changed Everything" on the effects of the Reformation.

#### **Tuesday Ladies Bible Study**

Fellowship & study will be every Tuesday in the Large Conference Room from 9:30 - 11:00 am. They will be starting a video Advent series November 29.

#### **Thursday Morning Men's Bible Study**

Every Thursday morning at 6:30 am in the Cornerstone Room.

#### **Pastor Steve's Thursday Noon Bible Study**

The weekly noon Bible Study continues! The study is focused on the book of Revelation.

#### **Tuesday Evening Care Groups**

Join a group focused on dealing in the present with grief or trauma. Both are Tuesday evenings beginning at 6:00 pm. Buzz in at the door and we'll let you in.

- Pastor Nate's trauma support group meets in his office. If you'd like to attend or learn more, please call Pastor Nate through the church office or email him at [pastornate@stpetersfw.org](mailto:pastornate@stpetersfw.org) before attending for the first time.
- Michelle Leahy's group called From Mourning to Joy meets in the Ministry Conference Room. Walk-ins are welcome and you can jump into the group at any time throughout the year.

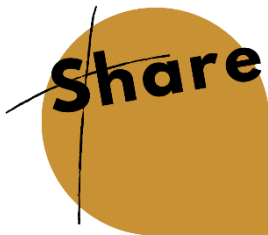


# Senior Saints

## **Christmas at the Embassy**

*Sunday, December 11 @ 4:00 pm*

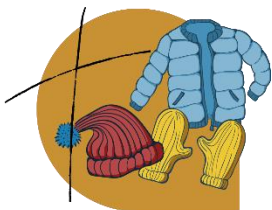
Concordia Lutheran High School's Music Department will be holding their annual Christmas at the Embassy Concert, Come and See! Christ the Lord, the Newborn King! at the historic Embassy Theatre. This celebration of our Savior's birth has become Concordia's annual gift to our community. Please join with Concordia students and staff as we share His Gift with others. Sign-up in the Ministry Center and pay the \$12 (senior discount age 60+) or \$18 for adults under 60 to the Church Office by December 4th. Purchased tickets can be picked up at the Church Office between December 6-9th during normal office hours.



## **SHARE HIM WITH OTHERS**

### **College Student Adoptions**

It's time! For those caring members of the congregation who are passionate about staying connected to our young adult members, come choose your student to adopt. In the Ministry Center are students ready to be adopted, and we have quite a few! Please be willing to minimally send monthly notes of encouragement to your adoptee. Don't want to do it alone? Have your small group, circle of friends, or bible study adopt a student. Twice a year, we will work together to send a larger care package.



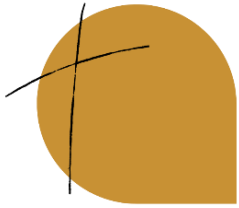
### **Compassionate Care Collection: Carriage House**

As it gets colder outside we remember those with serious mental illness who need help staying warm. Care compassionately by giving adult new or gently used clean jackets and new warm hats and gloves needed by the 2,000 CARRIAGE HOUSE members who are working toward returning to school or work, moving into a better place and staying out of the hospital. Thank you.

### **VBS Collecting Shiny Bits**

Looking to get rid of old Christmas decorations? 2023 VBS-Stellar would like to take them off your hands. We are looking for items that are silver or gold. These items could include bulbs, garland, wrapping paper, etc. We will also take any clear twinkle lights and any "snow" material. We look forward to Shining Jesus' Light in June 2023. Keep your calendar open that last week of June!





# Social Ministry

## Angel Tree

Angel Tree is coming November 26th. We again have the opportunity to provide gifts to the children of those that are incarcerated and also to children in the FWPD Victims Assistance program. We are providing gifts for over 100 children this year. Choose an Angel from the tree and record your name, phone number and Angel number on the sign-up sheet. Purchase a suggested gift (\$20-25 value) and return the wrapped gift to the Angel Tree by December 11th with the Angel attached. Members of the Social Ministry team will deliver the gifts along with a gospel tract and a Bible. Thank you for your participation.



## Thanksgiving Food Drive

Bring your canned foods and non-perishable items to either Thanksgiving Eve or day services this coming Wednesday or Thursday. THEN bring your family Friday morning at 9:00 am (before or after you do your holiday shopping) to sort, divide, and distribute the food items collected. With God's guidance and direction, we will again be able to help families, members and non-members alike, to have a happy Thanksgiving. Praise God!

## LSSI Christmas Goal Achieved!

The Lord has provided once again through the gifts of His people! We currently have met and even exceeded our goal of \$1100 to support our four dear families given to us this year. All the contributions up to \$1100 will be converted into St. Peter's SCRIP cards. Any donations over and above this will be sent to LSSI as a check for them to use as needed to support other families. The deadline had been set for November 29th, but praise God our goal has been met early.

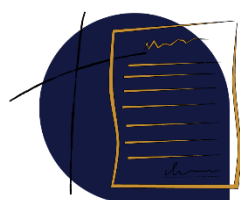






## Honor Flight Veterans of St. Peter's

We are so thankful for these men who all served in the Korean war. Pictured from left to right is Dawn Buhr, Tike Ehle, Al Selking, Ralph Merkel, and Mike Buhr.



# Records Update

## October

### Transfer In:

George & Marilyn Miranda from St. John's Lutheran, Flatrock

### Baptism:

Colson Jeffrey Samuel Casteel (10/15)

Brandy Mason (Adult) (10/30)

### Births:

Johnathan David Roembke (10/18) to parents Kevin & Ruth Roembke



# Stewardship Corner

## TITHES & OFFERINGS

### Stewardship Corner as of 11/6/2022

God certainly gives us what is good; let us return a portion to him!



	Month to Date	Year to Date
Total Giving	\$19,851	\$363,094
Budget	\$20,988	\$370,901
Surplus/(Deficit)	(\$1,137)	(\$7,807)
Loan Balance		\$1,092,163

***Our November Special Offering is going to the Associated Churches Food Bank***

# LORD'S WEEK AT A GLANCE

## **Saturday, November 19**

5:00 pm - Worship w/ Communion  
7:00 pm - HSYG Basketball (Church Gym)

## **Sunday, November 20**

8:00 am - Worship w/ Communion  
9:15 am - Adult Bible Study (Cornerstone)  
9:15 am - Public School Confirmation (Large Conference Room)  
9:15 am - Adult Instruction Class: New Members (Ministry Conference Room)  
10:30 am - Worship w/ Communion  
5:00 pm - Pickleball (Church Gym)  
6:00 pm - HSYG Meeting (Parish House)

## **Monday, November 21**

6:00 - Finance Committee Meeting (Large Conference Room)  
7:00 pm - Brass Choir Rehearsal (Sanctuary)

## **Tuesday, November 22**

9:30 am - Tuesday Ladies Bible Study (Large Conference Room)  
5:00 pm - From Mourning to Joy Grief Support (Ministry Conference Room)  
6:00 pm - Trauma Support Group (Pastor Nate's Office)

## **Wednesday, November 23**

7:00 pm - Thanksgiving Eve Worship

## **Thursday, November 24**

Church Office & Schools Closed - Thanksgiving Break

9:00 am - Thanksgiving Worship (Sanctuary)

## **Friday, November 25**

Church Office & Schools Closed - Thanksgiving Break

9:00 am - Thanksgiving Food Drive Sorting (West Corridor)